

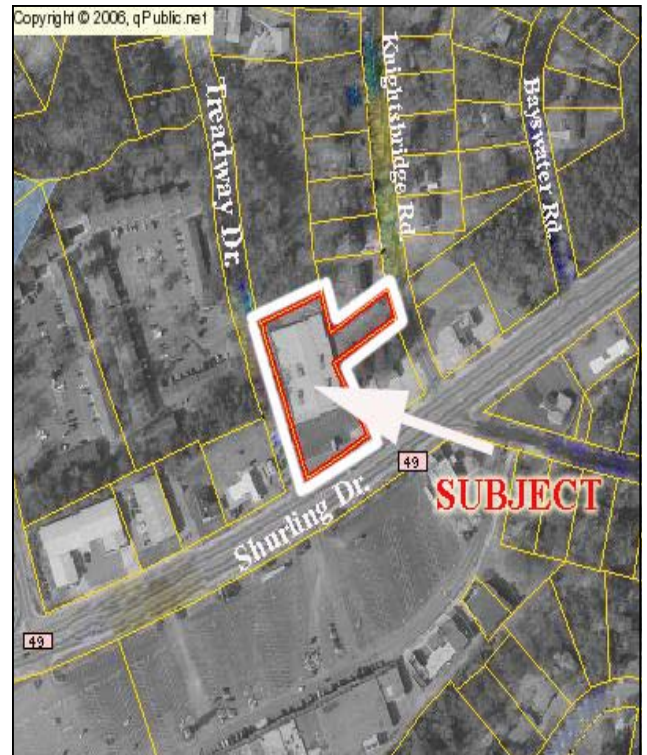
Retail/Showroom Space 1900 Shurling Drive Macon, Georgia



Lease Price: \$2.50 psf NNN
Sale Price: \$ 525,000



- ◆ 21,600 sf which includes 5,000 sf storage in rear and 14,000 sf showroom plus 2,400 sf lower level entrance off Treadway Dr.
- ◆ 1.17 Acres
- ◆ Front and Side Parking
- ◆ Dock high loading in rear
- ◆ Sprinklered
- ◆ Built in 1970
- ◆ Located at the corner of Treadway Drive and across the street from Shurlington Plaza
- ◆ Traffic count: 24,000 vpd
- ◆ Est. Taxes: \$5,000/year
- ◆ Est. Insurance: \$600/year



Larry E. Crumbley, CCIM, CPM, SIOR, CRE 478-746-9421

To view additional properties, please visit: www.lcrumbley.com
See detailed property information on www.Fickling.com



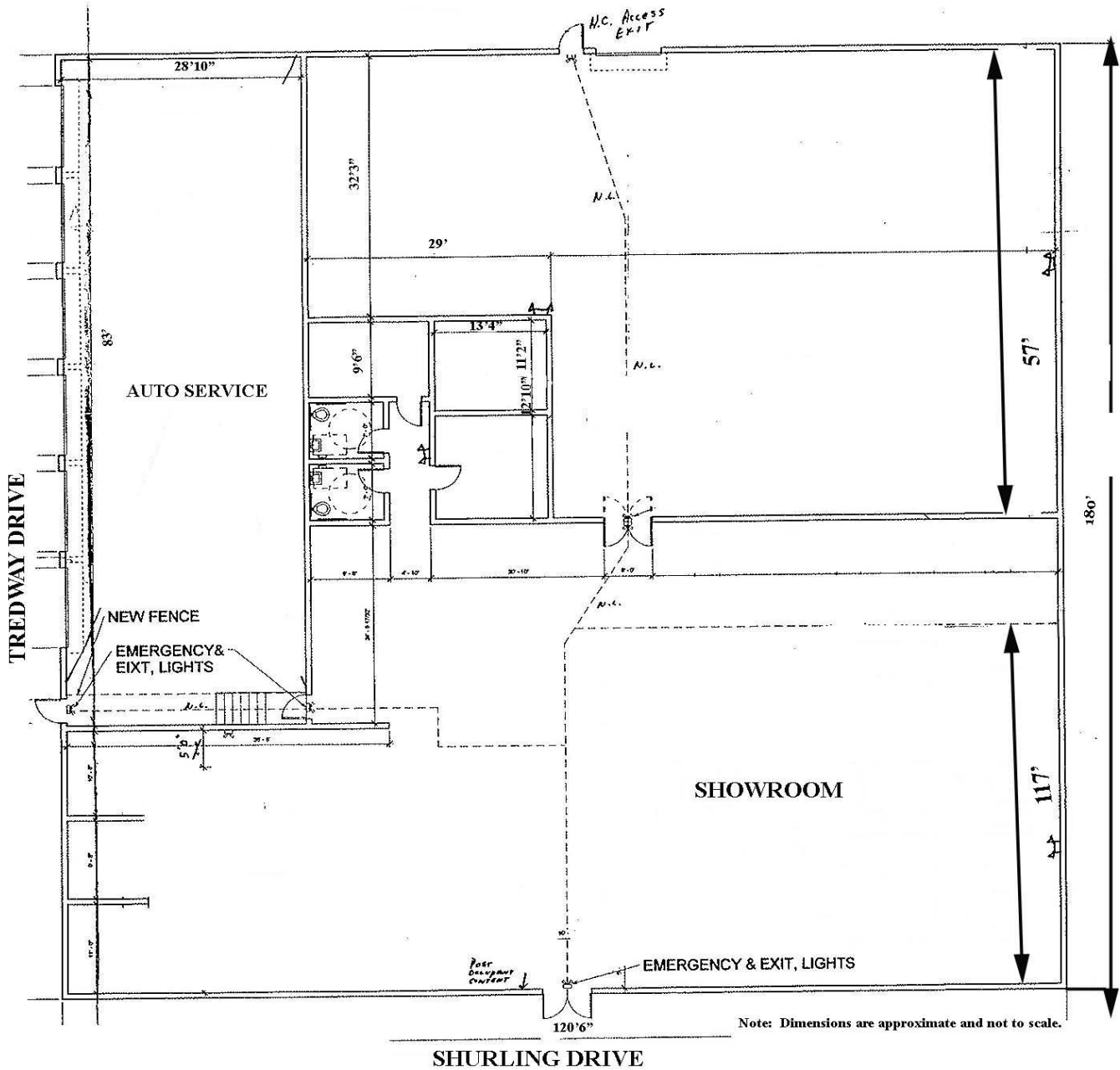
A Full Service Real Estate Company

Commercial Division
577 Mulberry Street
P.O. Box 310
Macon, GA 31202
(478) 746-9421

www.fickling.com

This information is from resources deemed to be reliable, no warranties or guarantees for accuracy are made by Fickling and Company

Retail/Showroom Space 1900 Shurling Drive Macon, Georgia



Larry E. Crumbley, CCIM, CPM, SIOR, CRE 478-746-9421
 To view additional properties, please visit: www.lcrumbley.com
 See detailed property information on www.Fickling.com



Commercial Division
 577 Mulberry Street
 P.O. Box 310
 Macon, GA 31202
 (478) 746-9421

www.fickling.com

This information is from resources deemed to be reliable, no warranties or guarantees for accuracy are made by Fickling and Company