

Space Available

1901 A Paul Walsh Drive
Macon, Georgia, 31208



Improvements: Existing retail space located adjacent to Virginia College.

Zoned: C-2

Building Size: 55,484 sf

Ceiling Height: 16' to ceiling tile;
20' to roof deck

Column Spacing: 32'

Year Built: 1998

Frontage: Eisenhower Parkway frontage with 24,000+ vehicles per day. Pylon signage on Eisenhower Pkwy.

Location: Located near Macon Mall on one of Middle Georgia's premier retail corridors. Direct access to I-475 and I-75. Traffic signal into the property at Eisenhower Parkway.

Nearby Businesses: Virginia College, Academy Sports, Granger Wholesale, Paul Walsh Nissan, Books-A-Million, GA State Farmers Market and Paul Walsh Honda.

Uses: Excellent for call center, retail, distribution/wholesale or warehouse

Rental Rate: \$2.50 psf NNN

2010 Demographics	1 Mile	3 Miles	5 Miles
Population	6,740	61,073	91,266
Median Age	32.8	32.6	34.7
Average HH Income	\$33,864	\$37,302	\$45,416

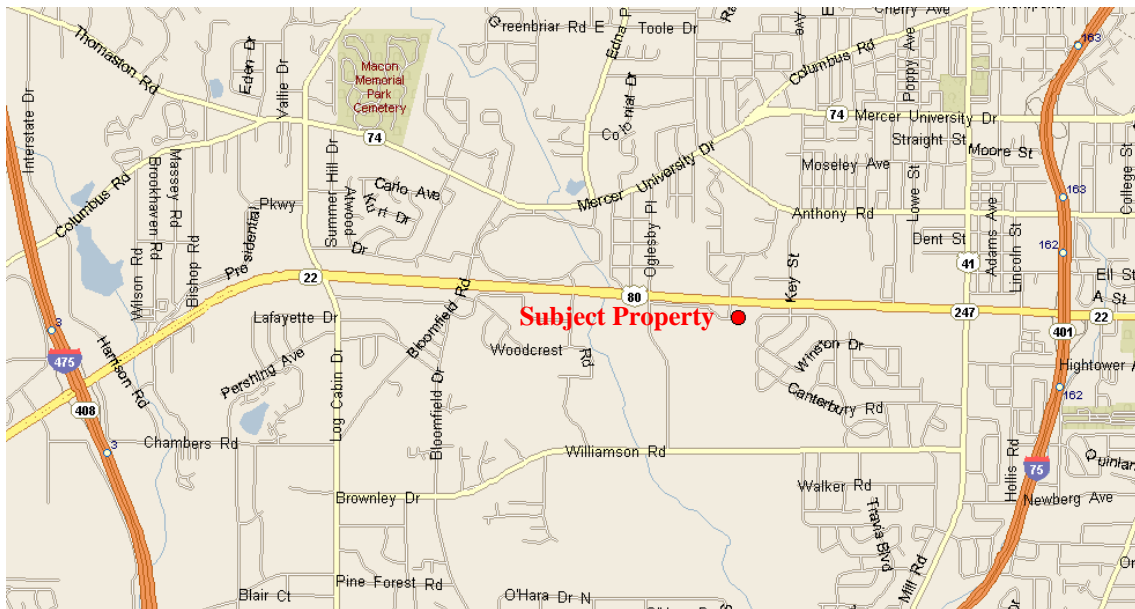
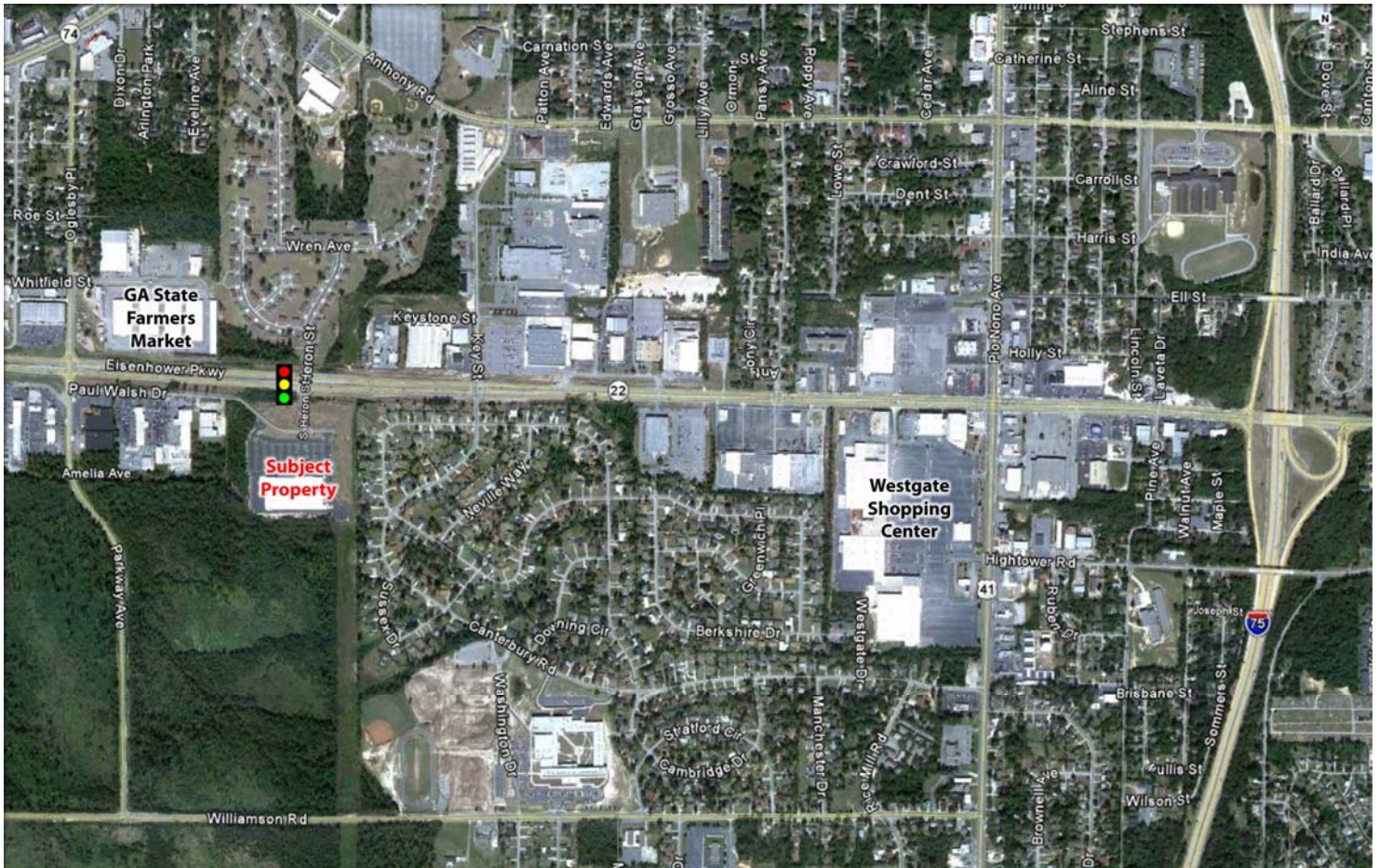


Contact:
Larry Crumbley, CCIM, CPM, SIOR, CRE
Phone: 478-746-9421 Cell: 478-737-3381
Email: lcrumbley@fickling.com
For detailed property information see
www.lcrumbley.com

Commercial Division
577 Mulberry Street
P.O. Box 310
Macon, GA 31202
(478) 746-9421
(478) 742-2015 FAX

www.fickling.com

1901 A Paul Walsh Drive · Macon, GA 31208



Contact:

Larry Crumbley, CCIM, CPM, SIOR, CRE

Phone: 478-746-9421 Cell: 478-737-3381

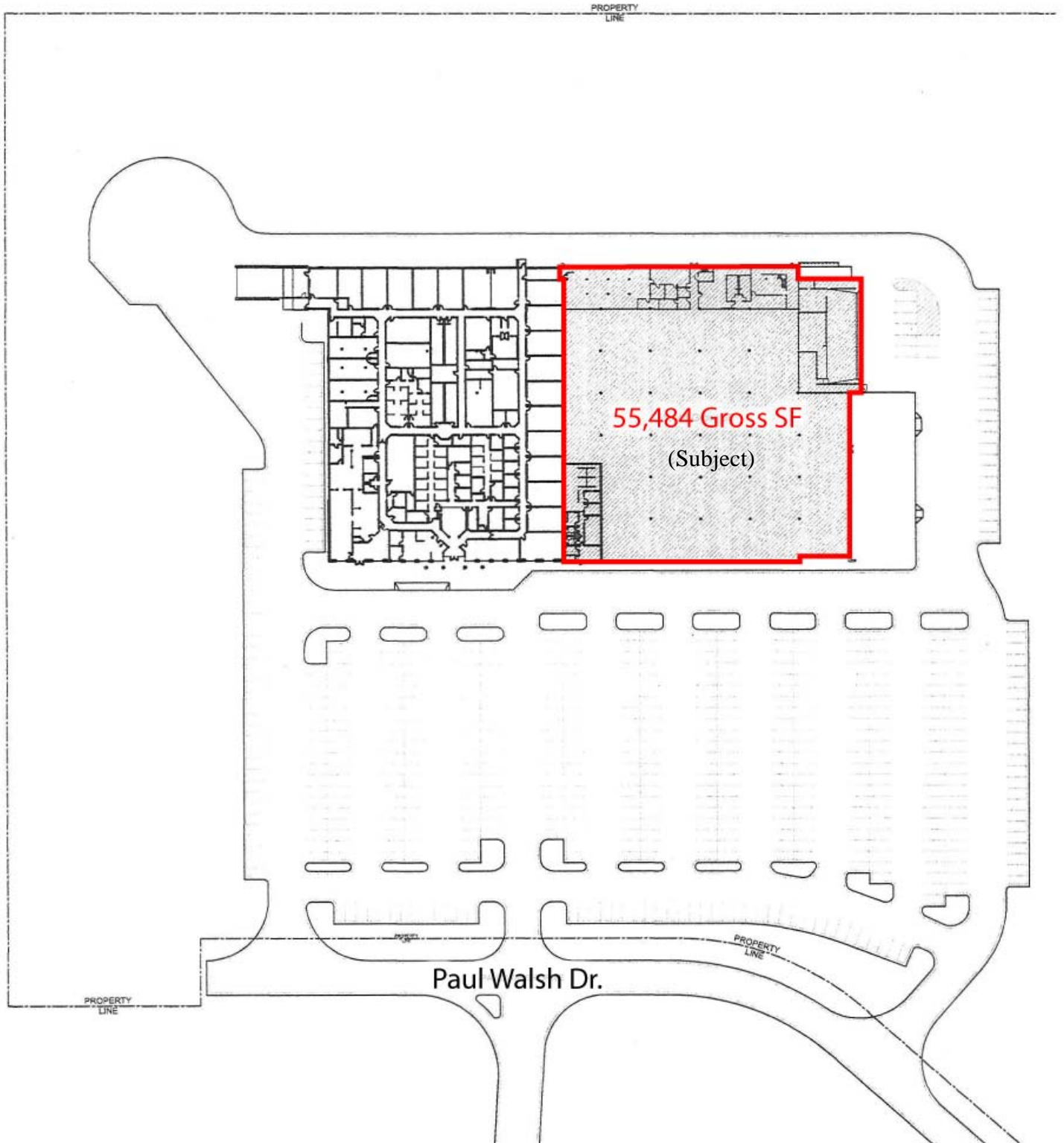
Email: lcrumbley@fickling.com

For detailed property information see
www.lcrumbley.com

Commercial Division
577 Mulberry Street
P.O. Box 310
Macon, GA 31202
(478) 746-9421
(478) 742-2015 FAX

www.fickling.com

This information is from resources deemed to be reliable, no warranties or guarantees for accuracy are made by Fickling and Company



Contact:

Larry Crumbley, CCIM, CPM, SIOR, CRE

Phone: 478-746-9421 Cell: 478-737-3381

Email: lcrumbley@fickling.com

For detailed property information see
www.lcrumbley.com

Commercial Division

577 Mulberry Street
P.O. Box 310

Macon, GA 31202

(478) 746-9421

(478) 742-2015 FAX



A Full Service Real Estate Company

www.fickling.com