

# For Sale Commercial Land - Mercer Junction Macon, Georgia 31210



## Nearby Businesses in the Area

1. Race Trac (convenience store)
2. Ferguson Plumbing
3. FedEx
4. Union Elementary School
5. Home Depot Distribution Center
6. Eisenhower Crossing  
Target, Home Depot, Dick's, Marshall's,  
HH Gregg, Best Buy, Kroger, Ross, PetSmart
7. Sam's Club
8. Wal-mart

**One of only a few large interstate development tracts left in Middle GA**

**PRICE: \$625,000**

(\$12,500 per Acre)

Call Agent about subdivided prices.

**Size:** 2.7 to 50 acres with water, sewer,  
curb & gutter

**Zoning:** PDE

**Location:** Located with easy access to one of  
Macon's highest growth areas.

**Utilities:** Public sewer (8") and public water (8")  
provided by Macon Water Authority.  
Electric provided by Georgia Power.



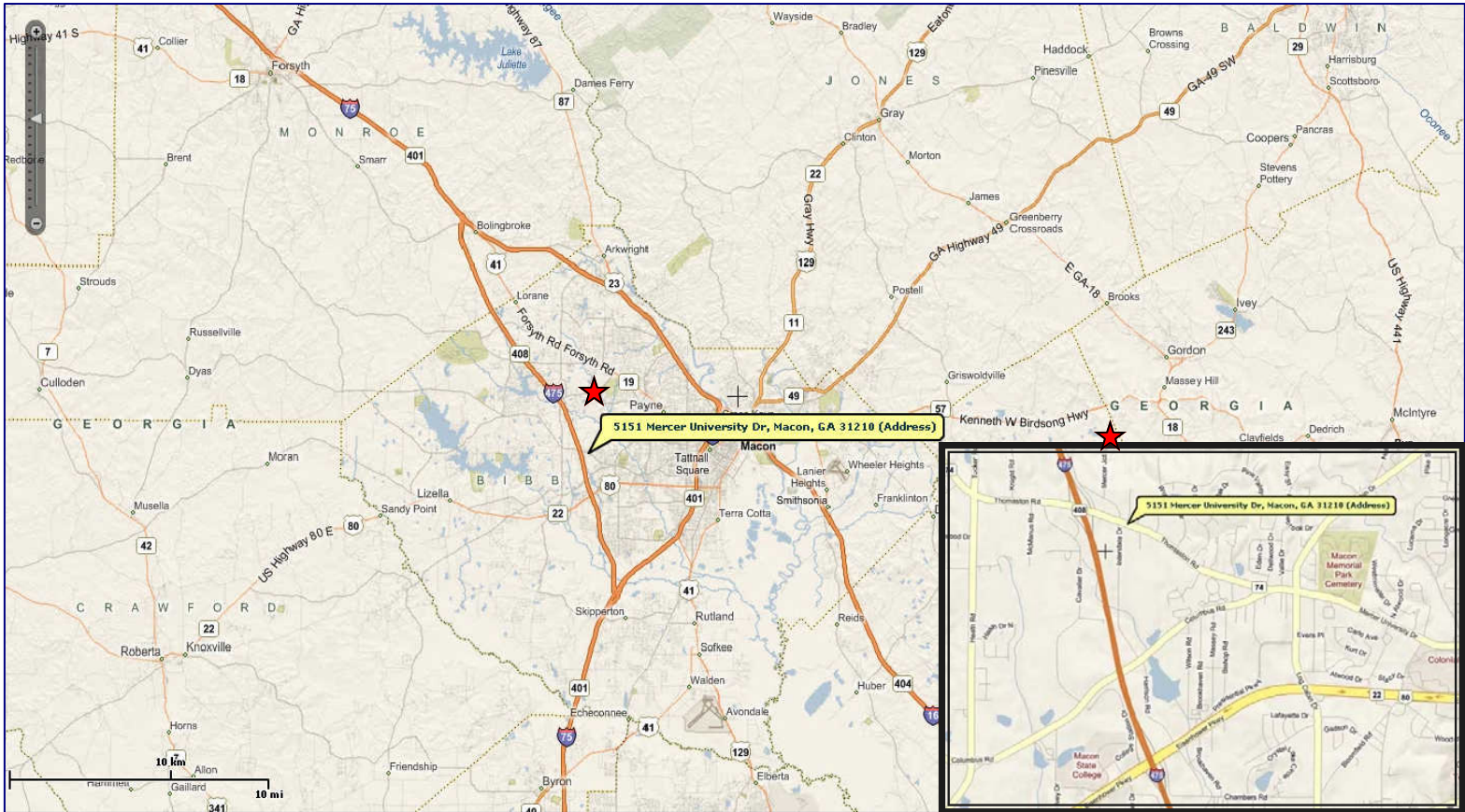
**Contact:**  
**Larry Crumbley, CCIM, CPM, SIOR, CRE**  
Phone: 478-746-9421 Cell: 478-737-3381  
Email: [lcrumbley@fickling.com](mailto:lcrumbley@fickling.com)  
For detailed property information see  
[www.lcrumbley.com](http://www.lcrumbley.com)

**Commercial Division**  
577 Mulberry Street  
P.O. Box 310  
Macon, GA 31202  
(478) 746-9421  
(478) 742-2015 FAX

[www.fickling.com](http://www.fickling.com)

This information is from resources deemed to be reliable, no warranties or guarantees for accuracy are made by Fickling and Company

# For Sale Commercial Land - Mercer Junction Macon, Georgia 31210



**This property is ideal for light industrial, distribution and office.**

Demographics	1 Mile	3 Miles	5 Miles
Population	2,942	29,969	94,255
Median Age	29.4	33.3	35.8
Average HH Income	\$60,655	\$50,832	\$53,814

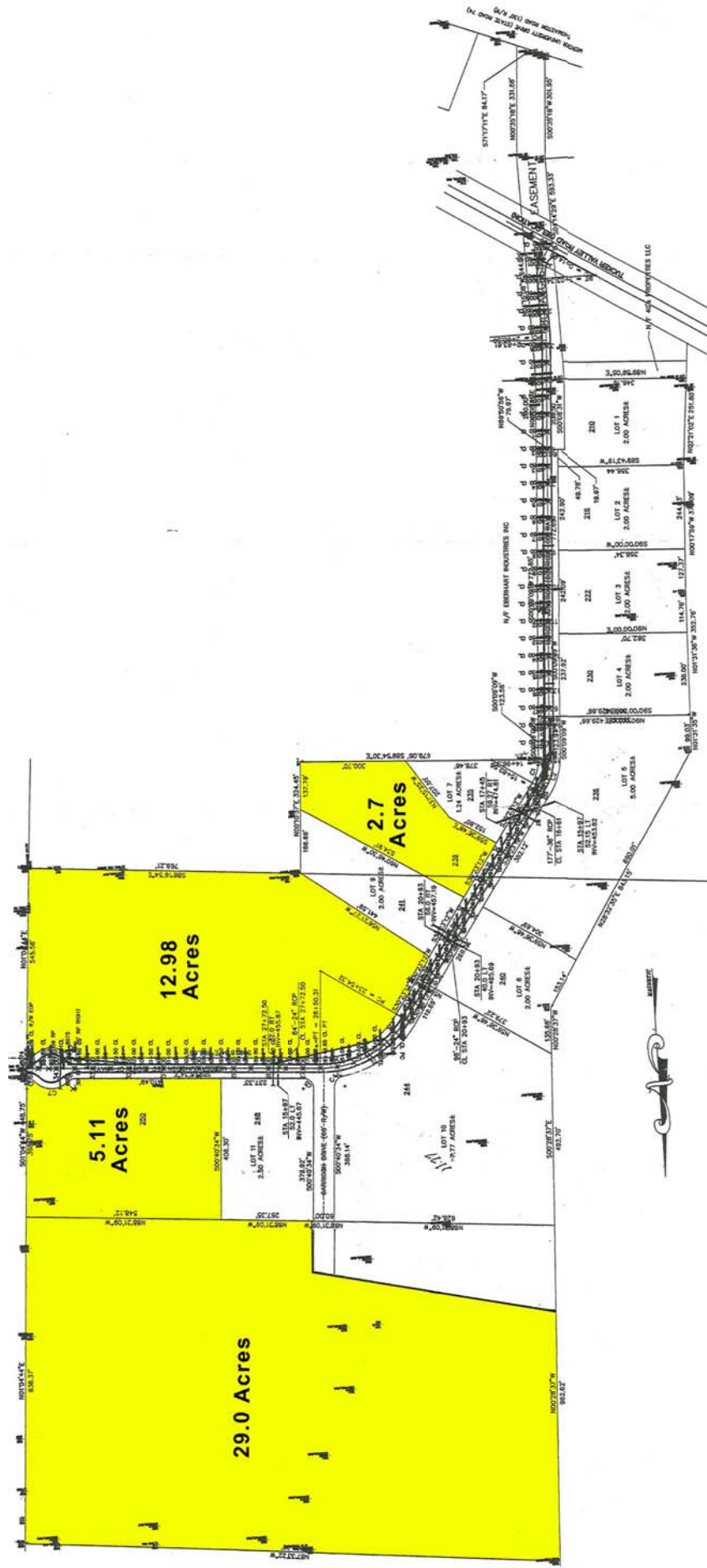


**Contact:**  
**Larry Crumbley, CCIM, CPM, SIOR, CRE**  
 Phone: 478-746-9421 Cell: 478-737-3381  
 Email: [lcrumbley@fickling.com](mailto:lcrumbley@fickling.com)  
 For detailed property information see  
[www.lcrumbley.com](http://www.lcrumbley.com)

**Commercial Division**  
 577 Mulberry Street  
 P.O. Box 310  
 Macon, GA 31202  
 (478) 746-9421  
 (478) 742-2015 FAX

[www.fickling.com](http://www.fickling.com)

**For Sale**  
**Commercial Land - Mercer Junction**  
**Macon, Georgia 31210**



This information is from resources deemed to be reliable, no warranties or guarantees for accuracy are made by Fickling and Company